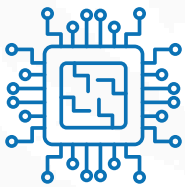


RESA M Ku Multi-Orbit



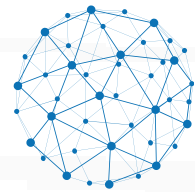
Requtech Electronically Scanned Antenna
- fully integrated satellite terminal for mobility on GEO & LEO



Fully integrated SATCOM terminal



Lightweight



Instantaneous connection for rapid deployment in the harshest conditions

RESA M Ku Multi-Orbit is a fully integrated, electronically scanned array (ESA) SATCOM terminal designed for seamless connectivity across GEO and LEO constellations. Built for both on-the-move and on-the-pause operations, it delivers high reliability and throughput in the harshest environments. The rugged **MIL-STD-810, IP66** design includes field-replaceable cooling modules and IP66 protection for all-weather performance. Advanced acquisition and tracking algorithms ensure rapid deployment and stable links.

With its fully electronic beam steering, RESA M Ku achieves the lowest Size, Weight, and Power (SWaP) in its class, delivering maximum performance for tactical missions.

RESA series supports Marine, Vehicle & Portable applications.



INTELSAT
Qualified Terminal



requtech

Made by Sweden: Reliability and Innovation in Challenging Environments



TECHNICAL DETAILS

RF PERFORMANCE	
TX Frequency	13.75 – 14.50 GHz or 12.75 - 13.25 GHz
RX Frequency	10.70- 12.75 GHz or 10.70 - 11.45 GHz
G/T, typical (boresight)	11 dB/K
Linear EIRP (boresight)	49 dBW (The ESA aperture power corresponds to a 50W BUC or larger.)
Polarity	Linear or Circular electronically switched
Side-lobe PDR Tx	PSD Tx FCC 25.218
Tx XPD	25 dB
Rx XPD	25 dB
ELECTRONIC SCANNING SPECIFICATIONS	
Tracking error	< 0.05 dB
Beam update rate	100 Hz
Field of view	160°
Azimuth adjustment	360° with a pointing step size of 0.1°
Elevation adjustment	Electronically beam steering from 10° to 90°

ELECTRICAL SPECIFICATIONS	
Power Supply (excl. Modem)	24V
Power consumption (typical)	480W
INTERFACES	
DC Power	MIL-DTL-5015 (2-pin)
Ethernet	RJ45
ENVIRONMENTAL SPECIFICATIONS	
Operating Temperature	-20° to +60°C / -5° to +140°F
Storage Temperature	-40° to +70°C / -40° to +160°F
Protection	Compatible with MIL-STD-810 requirements (field-tested), IP66
Wind	250 km/h / 155 mph
WEIGHT AND DIMENSIONS	
Dimensions	L97xW55xH13 cm
Terminal Weight	38 kg



**Always Connected.
Always Mission Ready.**



Requitech AB, based in Linköping, Sweden, is at the forefront of satellite communication technology. We specialize in developing high-performance, reliable satellite communication systems. Our mission is to revolutionize communication capabilities, enhancing global connectivity through innovative solutions.

Contact information
Telephone +46 (0)13 311771
E-mail info@requitech.se
www.requitech.com



*The present documentation provides typical specifications and data may change without notice.
© All rights reserved. No part of this publication may be reproduced, distributed, or transmitted in any form or by any means, without the prior written permission of ReQuTech AB.*

